



PURPLE URCHIN FIELD GUIDE



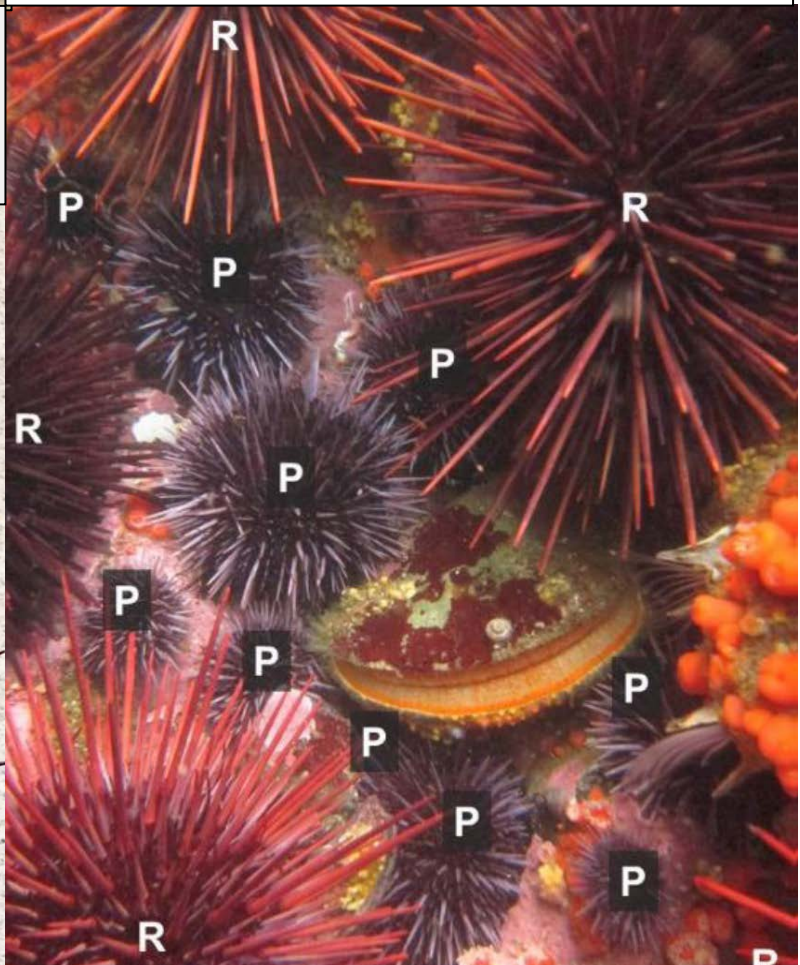
Strongylocentrotus purpuratus, can grow to 4 inches across; the spines are about 1/3 inch long. This bottom-dweller ranges from a light purple to a deep purple color (juveniles are green).

**THIS IS THE TARGET SPECIES.
PLEASE FAMILIARIZE YOURSELF
WITH TELLING CHARACTERISTICS**

PURPLES: light to dark purple
Max spine length: Short; < half diameter of test/shell. Spines are uniform length.



REDS: Red to black; adults much bigger.
Max spine length: Longer; Roughly equal to diameter of test/shell. Spines mixed length.



EMERGENCY REGULATIONS

- You must have a valid fishing license
- Daily bag limit in Mendocino and Sonoma Counties is 20 gallons
- Collection only through free or SCUBA diving, not by foot;
- No possession limit for purple urchin;
- Only removal, avoid smashing.